

Green Cities

PPPM 445 CRN 00000

Fall 2022

CRN 11709

Gerlinger Hall, Room 242

4:00-5:20 M/W

September 27—December 9

Ric Stephens, Instructor

ric@uoregon.edu

(503) 501-7397

Course Description

Examines the history and future of the interface between urban growth and environmental concerns, and the technological, social, and political forces that continue to shape it.

Class Format

Blended class sessions will involve both in-class and Zoom presentations of material by the instructor; class discussions; a design charrette or competition simulation, and a public hearing simulation. Students should be prepared to participate actively in classroom discussions. There will be field trips to Harris Hall in Eugene and a Waterfront Project [TBD]. An additional field trip may be scheduled to collaborate with the Sustainable Cities Year Program. The focus topic for this course is **waterfront planning and design**.

Required Reading

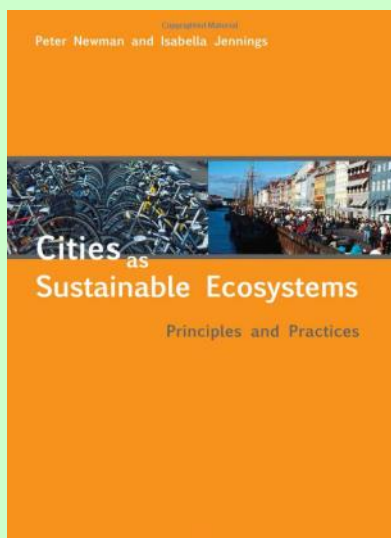
There is one required textbook: *Cities as Sustainable Ecosystems: Principles and Practices*. The textbook will be available online. Topics include:

- 📖 Vision
- 📖 Economy & Society
- 📖 Biodiversity
- 📖 Ecological Footprints
- 📖 Modeling Cities on Ecosystems
- 📖 Sense of Place
- 📖 Empowerment and Participation
- 📖 Partnerships
- 📖 Sustainable Production and Consumption
- 📖 Governance and Hope

In addition to the textbook above, students are required to read all assigned materials posted on the course Canvas and project websites.

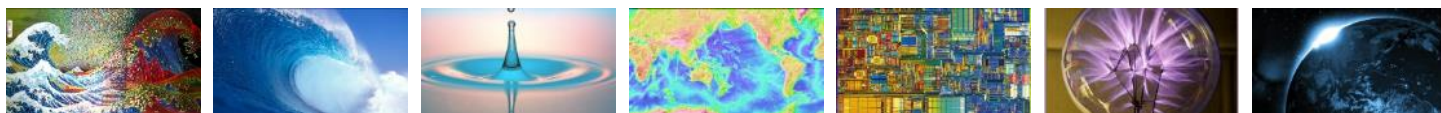
Course Grades

Online Quizzes (4)	40%
Design Charrette or Competition Simulation	10%
Public Hearing Simulation	10%
Informational Video	20%
Research Paper	20%



Textbook

Newman, P. & Jennings, I.
(2008) *Cities as sustainable ecosystems*. Washington: Island Press.



Assignments

The research paper is designed to help students develop an in-depth analysis of sustainability, resilience, and regeneration issues and apply the concepts studied in class. Students will select a **waterfront planning and design** topic that they will study in depth. Topic criteria are as follows: 1) relevance to student, 2) relation to course topics and your assigned project, 3) researchable, 4) strong student interest. Students will also prepare a video presentation which matches their research and course topic. The research papers will be compiled, edited and presented as a white paper or report.

Project Website

The project website is at <https://blogs.uoregon.edu/waterfront/>. Research work and informational videos will be posted to enable students to share their work.

Schedule

An outline for the class including the assigned readings, due dates for assignments, and quizzes is given below. Additional readings will be assigned throughout the term on **Canvas**. The schedule may be revised to accommodate guest speakers and Zoom videoconferencing. All research and media will be on our project website. The dates and topics may be adjusted throughout the course. Please refer to the CANVAS syllabus and project website for up-to-date scheduling, assignments and announcements.

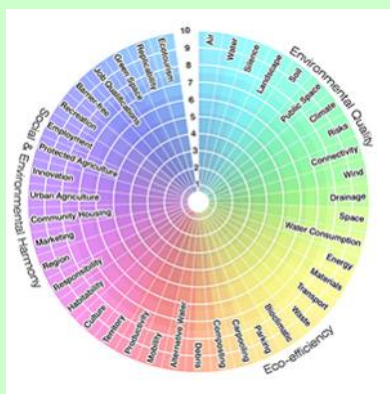
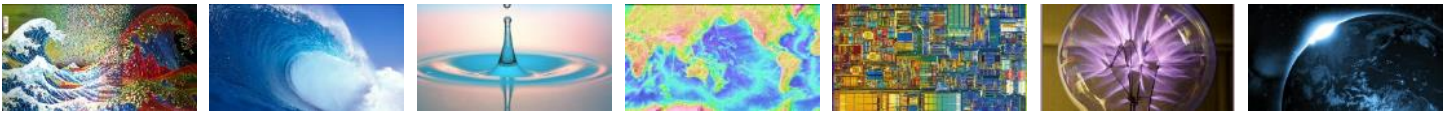


Waterfront Planning and Design

The project website includes the course description, contacts, resources, and student projects.

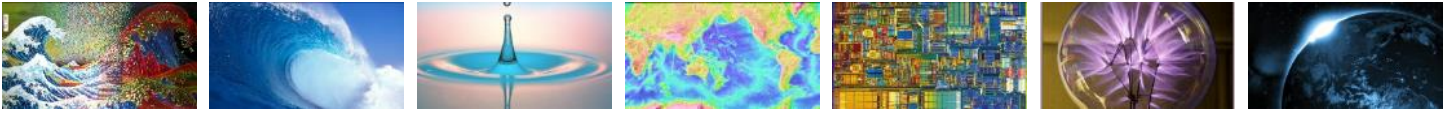
<https://blogs.uoregon.edu/waterfront/>

Date	Canvas	Topic
TBD		Waterfront Project Field Trip
Sep 27/29	1	Course Overview and Major Concepts / Vision
Oct 4/6	2	Mechanical, Systems & Planning Models / Economy and Society / Biodiversity Quiz 1
Oct 11/13	3	Ecological Footprints / Modeling Cities on Ecosystems
Oct 18/20	4	Sustainable Development, Urban Resilience & Regeneration Quiz 2
Oct 25/27	5	Empowerment and Participation Public Hearing Simulation
Nov 1/3	6	Sense of Place Quiz 3
Nov 8/10	7	Partnerships / Sustainable Production and Consumption Design Charrette or Competition Simulation
Nov 15/17	8	Governance and Hope / Trends, Projections, Predictions Quiz 4
Nov 22	9	Project Support [Zoom]
Dec 9	10	Research Paper & Informational Video



Multi-media Presentation
Your multi-media presentation must be a 3 to 4-minute video. This is a brief summary of your research topic that allows you to share critical concepts and/or projects to the entire class. It may be about your research topic only, or you may wish to focus on your assigned project recommendations.

Criteria	Unsatisfactory	Needs Signif. Improv.	Fair	Good	Very Good	Comment
CONTENT: 70% of research paper grade						
Content criterion #1 Introduction / Background Relevance Application / Replication						<p>Topic Students should select a research topic with the following attributes:</p> <ol style="list-style-type: none"> 1. Related to “green cities” and your assigned project. 2. An area of study that the student feels passionate about 3. Relevant to the student’s professional interest 4. Feasible within the constraints of the assignment format <p>You must select a topic and receive approval from the instructor prior to the 4th class.</p>
Content criterion #2 Conclusions and ten (10) Recommendations						
WRITING: 30% of grade						
Logical structure Introductory section to orient reader Clear sequence of sections Clear structure to sections Uses subheadings effectively Uses paragraphs to support structure Clear topic sentences Links between paragraphs Links within sections						<p>Format Students are free to format their papers however they chose. If there is concern about an unusual format, please contact the instructor. Digital file name: <i>lastname.pdf</i> or <i>lastname.doc</i>.</p>
Professional approach Objective: avoids bias & prejudice Assertions supported by evidence (references, clear information, citations) and not just opinion High quality sources						
Appropriate voice Appropriate use of active and passive voice Awareness of audience						<p>Length / Size The paper must be between 1,200–2,000 words total including 10 recommendations for your assigned project. This is approximately 3 to 5 pages. Shorter or longer papers will not receive full credit.</p>
Grammar Noun verb agreement Correct use of tense Complete sentences Appropriate punctuation No run on sentences Other grammar issues						
Referencing APA Format						<p>References Research papers must have a minimum of 10 references which may include interviews and digital media. Please use the APA format for references. There are many online tools to help you correctly cite your paper such as http://www.citationmachine.net/apa/cite-a-book</p>
Professional Presentation Don't overuse bullets Professional format (page #s, clear print, clear graphics) Free of handwritten edits Use graphics to support text, but not replace it						
Due Date Papers and digital presentation media are due on December 9th .						



Public Hearing Simulation
Lane County Harris Hall
125th East 8th Ave, Eugene

Academic Policies

Professional Practice

Students should treat each other and the instructor with the professional courtesy and respect expected in a workplace. All communications relating to this course and all work turned in for this course should reflect professional standards in tone, presentation, formatting and spelling.

The classroom is a place of focuses learning. This requires that students arrive on time, stay until the end of the class period, do not disrupt the class by leaving the room temporarily, and refrain from non-learning activities. Students who fail to adhere to these guidelines will be asked to leave for the remainder of the class session.

Documented Disabilities

Students who have a documented disability and anticipate needing accommodations in this course should make arrangements to see the instructor as soon as possible. They should also request that the Counselor for Students with Disabilities send a letter verifying the disability.

Incomplete

Students are strongly discouraged from requesting an incomplete. In accordance with University regulations, an incomplete will only be given when “the quality of work is satisfactory but a minor yet essential requirement of the course has not been completed for reasons acceptable to the instructor.” In addition, students should consult the university policies regarding academic practices (<http://libweb.uoregon.edu/guides/plagiarism/students/>). **There will be a single grade late-submittal penalty for the course.**

Academic Misconduct

You are expected at all times to do your own work. Copying content from other students and submitting it as your own work is grounds for failing the class. The University Student Conduct Code (available at conduct.uoregon.edu) defines academic

misconduct.

Plagiarism

Students should properly acknowledge and document all sources of information (e.g. quotations, paraphrases, ideas) and use only the sources and resources authorized by the instructor. If there is any question about whether an act constitutes academic misconduct, it is the students’ obligation to clarify the question with the instructor before committing or attempting to commit the act. Additional information is available at: www.libweb.uoregon.edu/guides/plagiarism/students.

Make-up Exams: Quizzes

Students must take all quizzes to receive a grade in the course. There are no required dates for quiz completion during the class, but all quizzes must be completed by the last day of the course, December 9th.

Quizzes may be submitted after that date to complete the course with a single grade late-submittal penalty for the course.

Inclusion Statement

The School of Planning, Public Policy and Management is a community that values inclusion. We are a committed to equal opportunities for all faculty, staff and students to develop individually, professionally, and academically regardless of ethnicity, heritage, gender, sexual orientation, ability, socio-economic standing, cultural beliefs and traditions. We are dedicated to an environment that is inclusive and fosters awareness, understanding, and respect for diversity. If you feel excluded or threatened, please contact your instructor and/or department head. The University Bias Response Team is also a resource that can assist you. Find more information at their website at <http://bias.uoregon.edu/index.html> or by phoning 541-346-2037.