

# Green Cities

PPPM 445 CRN 14364

Fall 2023

Tuesdays/Thursdays 4:00-5:20

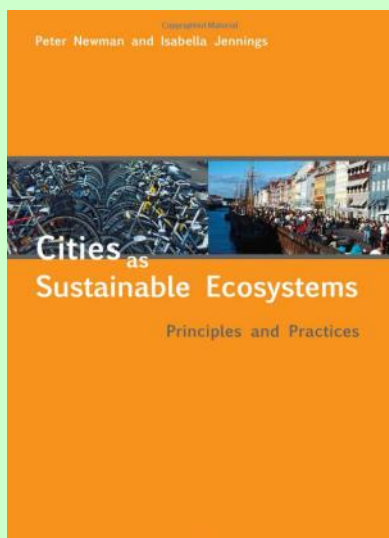
November 26—December 8

Tyke 140 & Zoom

Ric Stephens, Instructor

[ric@uoregon.edu](mailto:ric@uoregon.edu)

(503) 501-7397



## Textbook

Newman, P. & Jennings, I.  
(2008) *Cities as sustainable ecosystems*. Washington: Island Press.

\*In-class hours will be reduced to reflect off-site activities and assignments

## Course Description

Examines the history and future of the interface between urban growth and environmental concerns, and the technological, social, and political forces that continue to shape it.

## Class Format

Blended class sessions will involve the presentation of material by the instructor; class discussion; guest speakers and Zoom meetings with subject matter experts. Students should be prepared to participate actively in classroom discussions. Students must attend scheduled in-class meetings. Zoom meetings will be recorded so students may view asynchronously. This fall's course research topic is **artificial intelligence** and its relationship to sustainable development, urban resiliency, and regenerative design. We will be working with the City of Salem via the Sustainable City Year Program.

## Required Reading

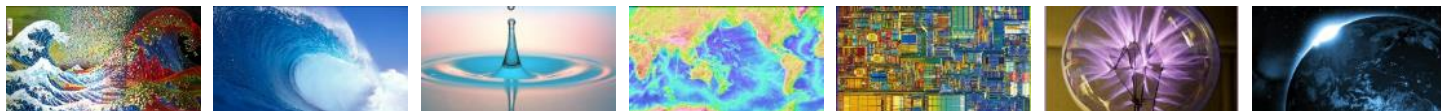
There is one required textbook: *Cities as Sustainable Ecosystems: Principles and Practices*. The textbook will be available online. Topics include:

- 📖 1 Vision
- 📖 2 Economy & Society
- 📖 3 Biodiversity
- 📖 4 Ecological Footprints
- 📖 5 Modeling Cities on Ecosystems
- 📖 6 Sense of Place
- 📖 7 Empowerment and Participation
- 📖 8 Partnerships
- 📖 9 Sustainable Production and Consumption
- 📖 10 Governance and Hope

In addition to the textbook above, students are required to read all assigned materials posted on the course Canvas and project websites.

## Course Grades

Online Quizzes (4)	40%
Public Hearing Simulation (City of Eugene)	10%
IT Workshop (City of Salem)	10%
Informational Video	20%
Research Project	20%



## Assignments

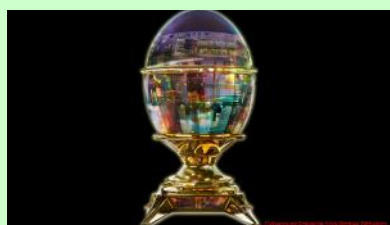
2023 summer quarter “Green Cities” students will study and collectively author an **artificial intelligence** report, *Large Language Models and AI-generated Content for Urban Planning*. Students will produce short informational videos on individual topics related to **artificial intelligence**. Students will conduct a public hearing simulation at Harris Hall in Eugene and an IT workshop in Salem. There are 4 multiple-choice quizzes. There will be several optional, extracurricular activities including a public art project, site visit, and drone photography. [see Canvas and project website for more information]

## Project Website

The course project website—**Artificial Intelligence**—is at <https://blogs.uoregon.edu/artificialintelligence/>

## Schedule

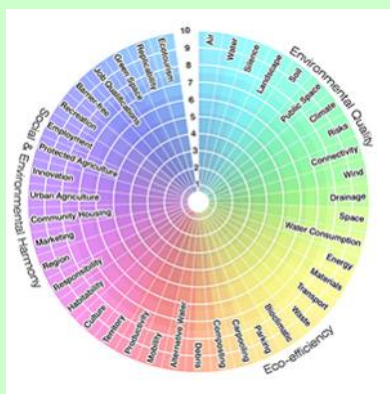
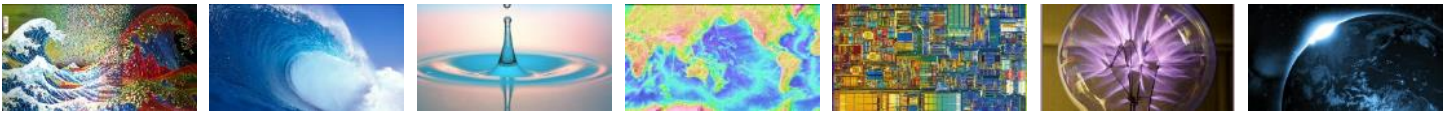
An outline for the class including the assigned readings, due dates for assignments, and quizzes is given below. Additional readings will be assigned throughout the term on Canvas. The schedule may be revised to accommodate guest speakers and Zoom videoconferencing. All research and media will be posted on our project website. The dates and topics may be adjusted throughout the course. Please refer to the CANVAS syllabus and project website for up-to-



### Artificial Intelligence

The project website includes course description, contacts, resources, and student projects. <https://blogs.uoregon.edu/artificialintelligence/>

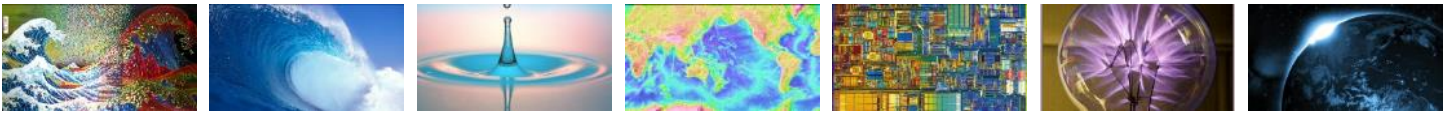
Date	Canvas Page	Topics and Reading Assignments
Sept 26/28	1	Course Overview and Major Concepts ④ 1 Vision
Oct 3/5	2	④ 2 Economy and Society, <b>Quiz 1</b>
Oct 10/12	3	④ 3 Biodiversity
Oct 17/19	4	④ 4 Ecological Footprints   5 Modeling Cities on Ecosystems, <b>Quiz 2</b>
Oct 24/26	5	④ 6 Sense of Place
Oct 31/ Nov 2	6	④ 7 Empowerment and Participation   8 Partnerships, <b>Quiz 3</b>
Nov 7/9	7	④ 9 Sustainable Production and Consumption   10 Governance and Hope,
Nov 14/16	8	<b>Artificial Intelligence Workshop, City of Salem, Quiz 4</b>
Nov 21/24		<b>No meetings</b>
Nov 28/30	9	Trends, Projections, Predictions
<b>Dec 8</b>		<b>Research Paper &amp; Informational Video</b>



## Multi-media Presentation

Your multi-media presentation must be a 3 to 4-minute video. This is a brief summary of your research topic that allows you to share critical concepts and/or projects to the class and public. It may be about your research topic only, or you may wish to focus on your assigned project recommendations.

Criteria	Unsatisfactory	Needs Signif. Improv.	Fair	Good	Very Good	Comment
<b>CONTENT: 70% of research paper grade</b>						
<b>Content criterion #1</b> Introduction / Background Relevance Application / Replication						<b>Research Assignment</b> Students should select a research topic with the following attributes: 1. Related to “green cities” and your assigned project. 2. An area of study that the student feels passionate about 3. Relevant to the student’s professional interest 4. Feasible within the constraints of the assignment format You must select a topic and receive approval from the instructor prior to the 4th class.
<b>Content criterion #2</b> Conclusions and ten (10) Recommendations						
<b>WRITING: 30% of grade</b>						
<b>Logical structure</b> Introductory section to orient reader Clear sequence of sections Clear structure to sections Uses subheadings effectively Uses paragraphs to support structure Clear topic sentences Links between paragraphs Links within sections						<b>Format</b> Students are free to format their papers however they chose. If there is concern about an unusual format, please contact the instructor. Digital file name: <i>lastname.pdf</i> or <i>lastname.doc</i> .
<b>Professional approach</b> Objective: avoids bias & prejudice Assertions supported by evidence (references, clear information, citations) and not just opinion High quality sources						
<b>Appropriate voice</b> Appropriate use of active and passive voice Awareness of audience						<b>Length / Size</b> The paper must be between 1,200–2,000 words <b>total</b> including 10 recommendations for your assigned project. This is approximately 3 to 5 pages. Shorter or longer papers will not receive full credit.
<b>Grammar</b> Noun verb agreement Correct use of tense Complete sentences Appropriate punctuation No run on sentences Other grammar issues						
<b>Referencing</b> <b>APA Format</b>						<b>References</b> Research papers must have a minimum of 10 references which may include interviews and digital media. Please use the APA format for references. There are many online tools to help you correctly cite your paper such as <a href="http://www.citationmachine.net/apa/cite-a-book">http://www.citationmachine.net/apa/cite-a-book</a>
<b>Professional Presentation</b> Don't overuse bullets Professional format (page #s, clear print, clear graphics) Free of handwritten edits Use graphics to support text, but not replace it						
<b>Due Date</b> Papers and digital presentation media are due on <b>December 8<sup>th</sup></b> .						



### Public Hearing Simulation

Lane County Harris Hall

## Academic Policies

### Professional Practice

Students should treat each other and the instructor with the professional courtesy and respect expected in a workplace. All communications relating to this course and all work turned in for this course should reflect professional standards in tone, presentation, formatting and spelling.

The classroom is a place of focuses learning. This requires that students arrive on time, stay until the end of the class period, do not disrupt the class by leaving the room temporarily, and refrain from non-learning activities. Students who fail to adhere to these guidelines will be asked to leave for the remainder of the class session.

### Documented Disabilities

Students who have a documented disability and anticipate needing accommodations in this course should make arrangements to see the instructor as soon as possible. They should also request that the Counselor for Students with Disabilities send a letter verifying the disability.

### Incomplete

Students are strongly discouraged from requesting an incomplete. In accordance with University regulations, an incomplete will only be given when “the quality of work is satisfactory but a minor yet essential requirement of the course has not been completed for reasons acceptable to the instructor.” In addition, students should consult the university policies regarding academic practices (<http://libweb.uoregon.edu/guides/plagiarism/students/>). **There will be a full grade penalty for the course if all assignments are not completed by the last class date, December 8<sup>th</sup>.**

### Academic Misconduct

You are expected at all times to do your own work. Copying content from other students and submitting it as your own work is grounds for failing the class. The

University Student Conduct Code (available at [conduct.uoregon.edu](http://conduct.uoregon.edu)) defines academic misconduct.

### Plagiarism

Students should properly acknowledge and document all sources of information (e.g. quotations, paraphrases, ideas) and use only the sources and resources authorized by the instructor. If there is any question about whether an act constitutes academic misconduct, it is the students’ obligation to clarify the question with the instructor before committing or attempting to commit the act. Additional information is available at: [www.libweb.uoregon.edu/guides/plagiarism/students](http://www.libweb.uoregon.edu/guides/plagiarism/students).

### Quizzes

Students must take all Canvas quizzes to receive a grade in the course. The dates and times for the quizzes provide a guide to keeping on track. All quizzes must be completed by the last scheduled course date. **If all quizzes have not been completed, students will receive an “Incomplete” and there will be a full grade penalty for the course after completion.**

### Inclusion Statement

The School of Architecture and Allied Arts is a community that values inclusion. We are a committed to equal opportunities for all faculty, staff and students to develop individually, professionally, and academically regardless of ethnicity, heritage, gender, sexual orientation, ability, socio-economic standing, cultural beliefs and traditions. We are dedicated to an environment that is inclusive and fosters awareness, understanding, and respect for diversity. If you feel excluded or threatened, please contact your instructor and/or department head. The University Bias Response Team is also a resource that can assist you. Find more information at their website at <http://bias.uoregon.edu/index.html> or by phoning 541-346-2037.

